



NELLE INVENTIVE
DI ROBERTO

DIVENTA UN'OPERA
E DECORATIVA, C

FUNZIONE PRATICA
ACQUERELLO E TINTI

DI PRESTIGIO. POI L'IMMAGINE
THE INVENTIVENESS OF ROBERTO

ART WHICH, AS IF BY

AND TINTORETTO STUCCO

PRESTIGE - WHICH THE PRIV

ATA FEDRIGONI LE SUPERFICI DI

SONO GIÀ UN MESSAGGIO DI FASCINO E

LINEA E RAFFORZA QUESTA SENSAZIONE.

THING INTO A PURELY ORNAMENTAL

SO PLAYS A PRACTICAL ROLE. THE

COMMUNICATE FASC

EMPHASISES AND RE

194

LUTA BETTONICA E GIANCARLO LEONE

ISY

BL 11 Design:
Luta Bettonica e Giancarlo Leone



CR
Cromo
Chrome



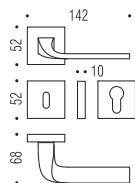
CM
Cromat
Matt chrome

DKZERO

BL 11 R-RY 52x52



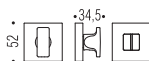
CR - CM



MM 29 BZG 52x52



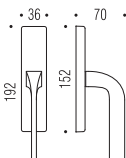
CR - CM



BL 12 IM



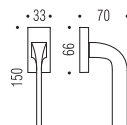
CR - CM



BL 12 DK/SM



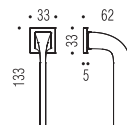
CR - CM

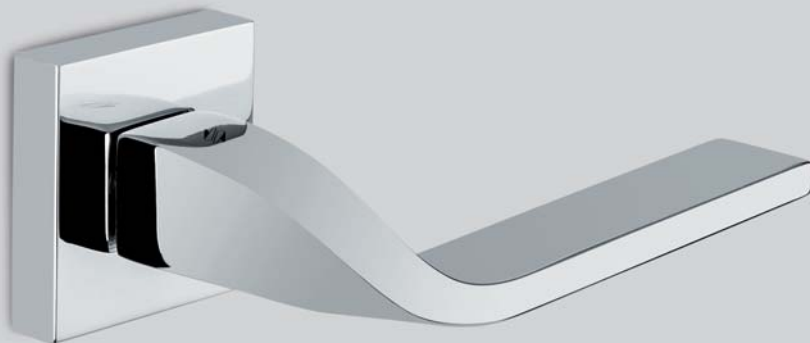


BL 12 DK0/SM



CR - CM





Materiale: Ottone
Material: Brass



ISY

BL 11 Design:
Luta Bettonica e Giancarlo Leone



CR
Cromo
Chrome



CM
Cromat
Matt chrome

DKZERO

BL 11 RF-RYF 50x50

FF 29 BZG 50x50

BL 12 DKF/SM

BL 12 DK0/SM

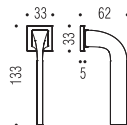
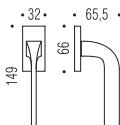
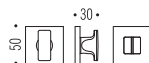
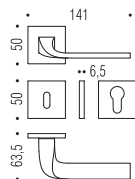


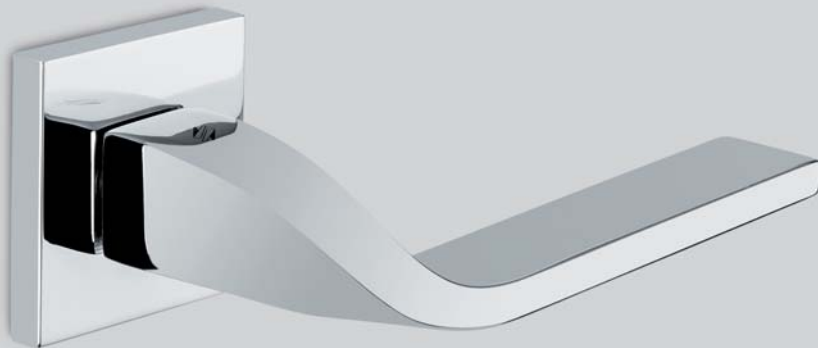
CR - CM

CR - CM

CR - CM

CR - CM





Materiale: Ottone
Material: Brass

