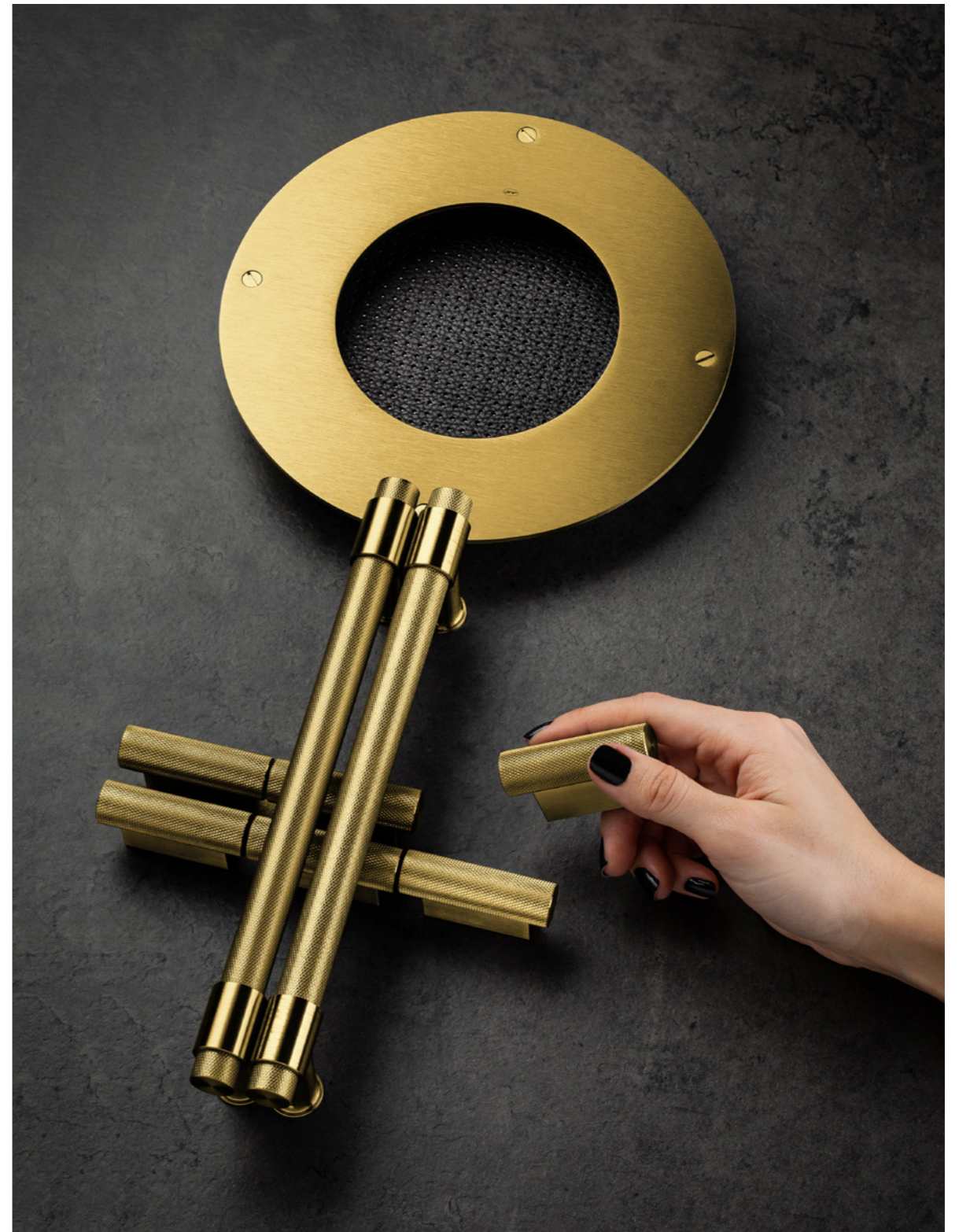


WATCH SERIES

STAINLESS STEEL PLUS
PVD TITANIUM
AÇO INOXIDÁVEL MAIS
TITÂNIO PVD



IMAGE / IMAGEM:
IN.00.172.16.KN.TG



EN

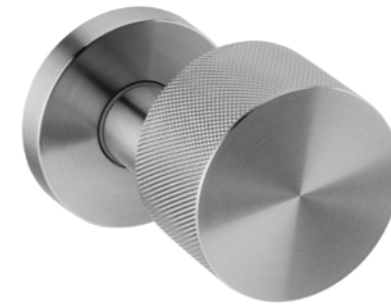
The new WATCH SERIES was inspired by the crowns of the watches and through its knurled finish, it conveys a character of precision and a pleasant touch in its use. Its sturdy shapes, together with its texture, gives a strong look suitable for sophisticated environments.

PT

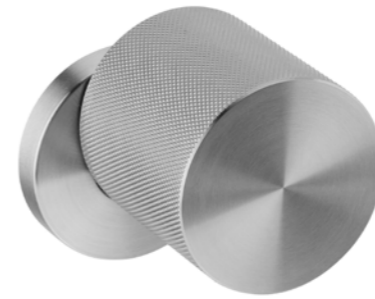
A nova SERIE WATCH foi inspirada pelas coroas dos relógios, e através do seu acabamento recartilhado transmite um caráter de precisão e um toque agradável na sua utilização. As suas formas robustas, juntamente com a sua textura, conferem um visual forte adequado a ambientes sofisticados.

WATCH SERIES

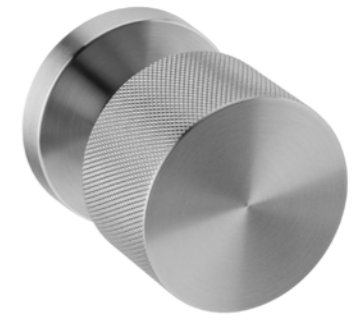
STAINLESS STEEL PLUS
PVD TITANIUM
AÇO INOXIDÁVEL MAIS
TITÂNIO PVD



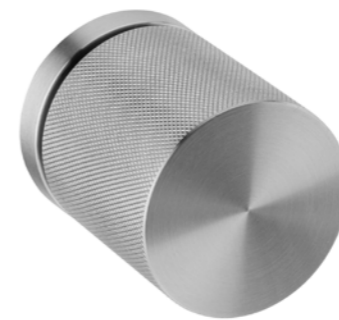
IN.00.203.KN > CLEAR WATCH DECENTERED
Lever handle / Puxador de porta



IN.00.201.KN > CLEAR WATCH SHADOW
Lever handle / Puxador de porta



IN.00.202.KN > CLEAR WATCH SIMPLE
Lever handle / Puxador de porta



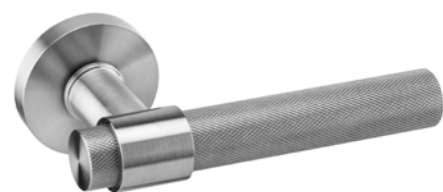
IN.00.199.KN > CLEAR WATCH
Lever handle / Puxador de porta



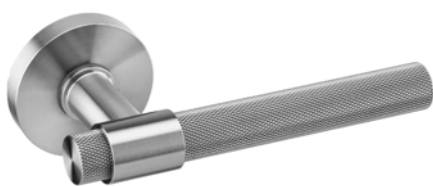
IN.00.200.KN > CLEAR WATCH PENDULAR
Lever handle / Puxador de porta

WATCH SERIES

STAINLESS STEEL PLUS
PVD TITANIUM
AÇO INOXIDÁVEL MAIS
TITÂNIO PVD



IN.00.145.KN > STOUT WATCH
Lever handle / Puxador de porta



IN.00.145.16.KN > STOUT WATCH
Lever handle / Puxador de porta



IN.04.266.KN > STOUT WATCH
Bathroom snib indicator /
Fecho para casa de banho



IN.07.123.16.D.200.KN > STOUT WATCH
Pull handle / Asa para porta



IN.07.123.16.D.300.KN > STOUT WATCH
Pull handle / Asa para porta



IN.00.172.16.KN > STOUT WATCH
Tourniquet / Torniquete



IN.00.173.16.KN > STOUT WATCH
Fixed tourniquet / Torniquete fixo



IMAGE / IMAGEM:
IN.00.145.16.KN + IN.04.266.KN

WATCH SERIES

STAINLESS STEEL PLUS
PVD TITANIUM
AÇO INOXIDÁVEL MAIS
TITÂNIO PVD

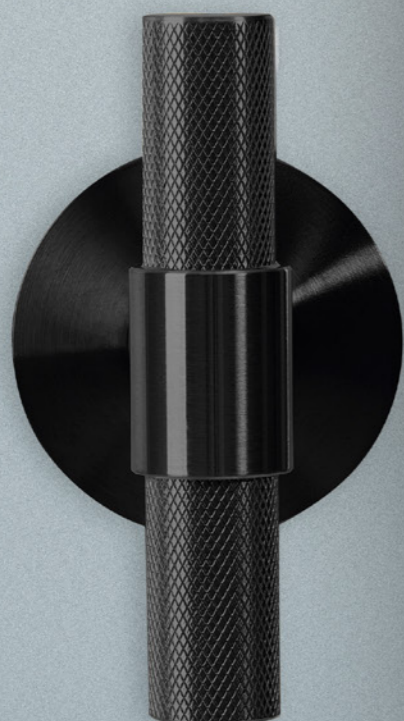


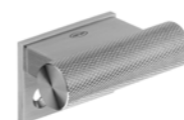
IMAGE / IMAGEM:
IN.00.172.V.KN.TB



IN.00.172.V.KN > STOUT WATCH
Double glass handle /
Puxador duplo para vidro



IN.00.145.DK.KN > STOUT WATCH
Lever handle / Puxador de porta



IN.17.135.KN > WATCH
Lift up window handle /
Levanta janelas de guilhotina



IN.17.605.KN > STOUT WATCH
Latch mechanism /
Mecanismo de cremone

IN.17.605.2
Window latch guide /
Guia para vareta

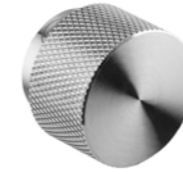
IN.17.605.10
IN.17.605.15
IN.17.605.30
Round rod /
Vareta redonda /



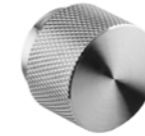
IN.17.145.KN > STOUT WATCH
Security mechanism for lift sliding
window or door /
Mecanismo de segurança para janela ou
porta de correr elevadora

WATCH SERIES

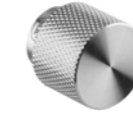
STAINLESS STEEL PLUS
PVD TITANIUM
AÇO INOXIDÁVEL MAIS
TITÂNIO PVD



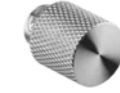
IN.22.161.30.KN > WATCH
Furniture knob /
Puxador de móvel



IN.22.161.25.KN > WATCH
Furniture knob /
Puxador de móvel



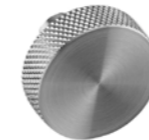
IN.22.161.20.KN > WATCH
Furniture knob /
Puxador de móvel



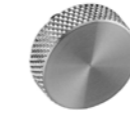
IN.22.161.15.KN > WATCH
Furniture knob /
Puxador de móvel



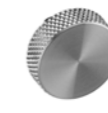
IN.22.161.10.KN > WATCH
Furniture knob /
Puxador de móvel



IN.22.160.30.KN > WATCH
Furniture knob /
Puxador de móvel



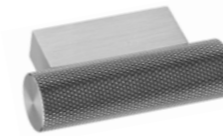
IN.22.160.25.KN > WATCH
Furniture knob /
Puxador de móvel



IN.22.160.20.KN > WATCH
Furniture knob /
Puxador de móvel



IN.22.133 > WATCH
Furniture knob /
Puxador de móvel



IN.22.135.KN > WATCH
Furniture knob /
Puxador de móvel



IN.22.152.16.KN > WATCH
Furniture knob /
Puxador de móvel



IN.22.162.KN > WATCH
Furniture knob /
Puxador de móvel

EN

The new WATCH SERIES was inspired by the crowns of the watches and through its knurled finish, it conveys a character of precision and a pleasant touch in its use. Its sturdy shapes, together with its texture, gives a strong look suitable for sophisticated environments.

PT

A nova SERIE WATCH foi inspirada pelas coroas dos relógios, e através do seu acabamento recartilhado transmite um caráter de precisão e um toque agradável na sua utilização. As suas formas robustas, juntamente com a sua textura, conferem um visual forte adequado a ambientes sofisticados.

EN

SPECIAL FINISH ON STAINLESS STEEL TITANIUM COATED

This finish is achieved by PVD technology (Physical Vapor Deposition). It is a non galvanic, pollution free process, widely used in the watchmaking industry. This is an exceptionally high quality finish, giving the final product an additional hardness and a very high corrosion resistance.

PT

ACABAMENTOS ESPECIAIS EM AÇO INOX REVESTIDO A TITÂNIO

Este acabamento é conseguido pela tecnologia PVD (Physical Vapor Deposition). É um processo não galvânico, não poluente, amplamente utilizado na indústria da relojoaria. Trata-se dum acabamento de excepcional qualidade, conferindo ao produto final uma dureza adicional e uma resistência à corrosão elevadíssima.

